

TAKEOUT SOLUTIONS

That Deliver!



PERFORMANCE PACKAGING FOR ALL YOUR TAKEOUT NEEDS.



Interested in more options?
SCAN TO SEE THESE LINES

Hot/Cold
Food Containers

ChampWare®



LOCATIONS

📍 CHATTANOOGA, TN | MANSFIELD, TX | FAIRFIELD, OH

CONTACT US

📞 Phone: (+1)423.756.5121

🌐 Website: sctray.com



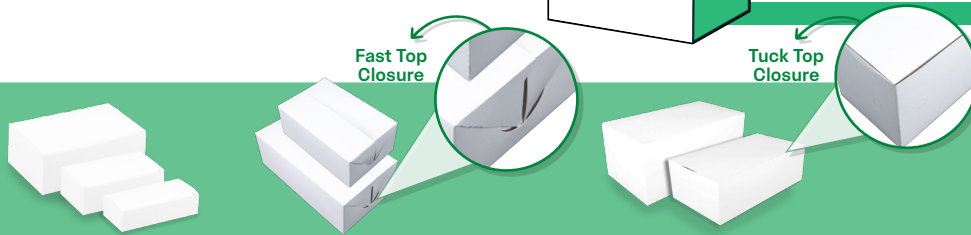
Contact your SCT Packaging Expert
for more information



@sctpackaging

TAKEOUT SOLUTIONS THAT DELIVER

TAKEOUT & TO-GO Barns & Boxes



2721, 2723, & 2725

2718, 2730

2729, 2757

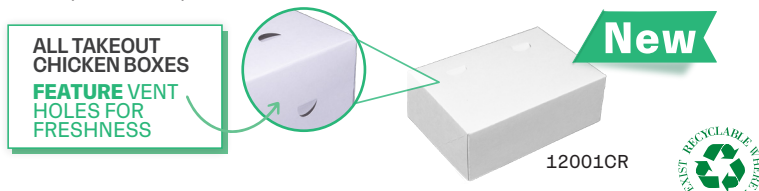
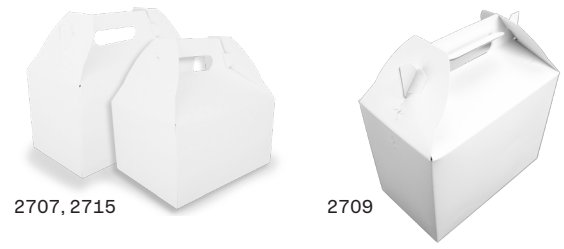


TAKEOUT BARN & BOXES - WHITE:

automatic, 1 piece box, himes, SBS, packed in corrugated, all barn sizes include slit locks to secure lid into either barn or box closure

Item #	Size (in)	Size (cm)	Pack
2721	5 X 2-1/4 X 1-1/4 -T	12.70 X 5.71 X 3.18 -T	250
2723	5 X 2-3/4 X 1-5/8 -T	12.70 X 6.99 X 4.13 -T	250
2725	6 X 3-7/8 X 2-1/4 -T	15.24 X 9.84 X 5.71 -T	250
2717	7 X 4-1/2 X 2-3/4 -T	17.8 X 11.4 X 7 -T	500
2718	7 X 4-1/2 X 2-3/4 -F	17.8 X 11.4 X 7 -F	500
2729	8-7/8 X 4-7/8 X 3-1/16 -T	22.5 X 12.4 X 7.8 -T	250
2730	8-7/8 X 4-7/8 X 3-1/16 -F	22.5 X 12.4 X 7.8 -F	400
2757	9 X 5 X 4 -T	22.9 X 12.7 X 10.2 -T	250
2701 5lb	8-7/8 X 5 X 3-1/2	22.5 X 12.7 X 8.9	250
2707	9-1/2 X 5 X 5	24.1 X 12.7 X 12.7	125
2709 10lb	8-7/8 X 5 X 6-3/4	22.5 X 12.7 X 17.1	150
2715	9-1/16 X 7-1/16 X 5	23 X 17.9 X 12.7	125

T = Tuck Top, F = Fast Top



TAKEOUT CHICKEN BOXES - WHITE:

automatic, 1 piece box, 6 corner beers, SBS, clay coating inside, packed in corrugated

Item #	Size (in)	Size (cm)	Pack
12001CR	7 X 5 X 2.5	17.78 X 12.7 X 6.4	300
12005CR	9 X 5 X 4	22.9 X 12.7 X 10.2	250
12009CR	9 X 9 X 3	22.9 X 22.9 X 7.6	200
12010CR	9 X 9 X 4	22.9 X 22.9 X 10.2	200
12015CR	10 X 10 X 4	25.4 X 25.4 X 10.2	100

PIRATE'S TREASURE KID'S MEAL BARN:

automatic, 1 piece box, himes, CRB, packed in corrugated, temporary tattoos included

Item #	Size (in)	Size (cm)	Pack
2793	6-7/16 X 4 X 3-3/4	16.4 X 10.2 X 9.5	96

FRESH SEAFOOD BARN:

automatic, 1 piece box, CUK, packed in corrugated

Item #	Size (in)	Size (cm)	Pack
2705	10-1/2 X 6 X 5	26.7 X 15.2 X 12.7	125

DON'T MISS THIS

2707-
Folded Flat 2707-
Gable-Barn

Our patented locking feature makes it possible to fold the top down and stack the barns as boxes, or lock the sides into the top for a classic gable-barn structure! This feature is included on all sizes of white and catering barns.



LOCATIONS

CHATTANOOGA, TN | MANSFIELD, TX | FAIRFIELD, OH

CONTACT US

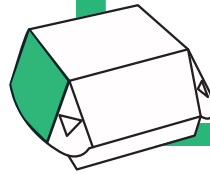
Phone: (+1)423.756.5121

Website: sctray.com



Contact your SCT Packaging Expert for more information





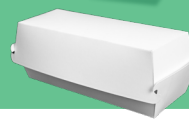
0705



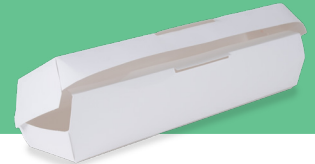
0713



0715



0716



0717

New

TAKEOUT CONTAINERS - WHITE:
food takeout, 1 piece, SBS, packed in corrugated



Item #	Description	Size (in)	Size (cm)	Pack
0705	Hamburger Clamshell	4-3/8 X 4-3/8 X 3-3/8	11.1 X 11.1 X 8.6	4 x 125 = 500
0713	Hot Dog Clamshell	6-1/8 X 2-1/8 X 2-1/4	15.5 X 5.4 X 5.7	4 x 125 = 500
0715	Specialty Sandwich Clamshell	7 X 3 X 2-5/8	17.8 X 7.6 X 6.7	4 x 125 = 500
0716	Jumbo Hot Dog Clamshell	7 x 2-15/32 x 2-3/4	17.8 X 6.3 X 7	4 x 125 = 500
0717	Footlong Hot Dog Clamshell	11-13/32 X 2-3/8 X 2-1/4	29 X 6 X 5.7	4 x 100 = 400

New

- Strong, lightweight design **keeps hot foods hot and cold foods cold**
- Moisture-venting, grease-resistant material **prevents soggy takeout**
- Fast-loading design** with secure locking lid and optional steam vents
- Sustainable, 100% post-consumer recycled material **with optional anti-fog window**

VENTED & LEAK/GREASE PROOF



TAKEOUT CONTAINERS - MICROFLUTE:
food takeout, 1 piece, Kraft F flute, packed in corrugated

New

Item #	Description	Size (in)	Size (cm)	Pack
07C1003	Microflute Clamshell - 5-1/2" Square	5.5 X 5.5 X 2.5	14.0 X 14.0 X 6.4	300
07C1005	Microflute Clamshell - 8" x 6" Rectangle	8 X 6 X 2.75	20.3 X 15.24 X 7.0	200
07C1007	Microflute Clamshell - 8" Square	8 X 8 X 3.33	20.3 X 20.3 X 8.5	110
07C1011	Microflute Clamshell - 11-1/5" Hogie	11.5 X 3.5 X 3	29.2 X 8.9 X 7.6	200
07C1109	Microflute Clamshell w/Window - 6-1/2" Personal Pizza	6.5 X 6.5 X 2	16.5 X 16.5 X 5.1	200
07C1101	Microflute Clamshell w/Window - 5" x 4" Snack	5 X 4 X 2	12.7 X 10.2 X 5.1	300
07C1103	Microflute Clamshell w/Window - 5-1/2" Square	5.5 X 5.5 X 2.5	14.0 X 14.0 X 6.4	300
07C1105	Microflute Clamshell w/Window - 8" x 6" Rectangle	8 X 6 X 2.75	20.3 X 15.2 X 7.0	200
07C1113	Microflute Clamshell w/Window - Pizza Slice*	8.25 X 9.25 X 2	21.0 X 23.5 X 5.1	200

*Fits a 16" pizza cut 6 ways

LOCATIONS

CHATTANOOGA, TN | MANSFIELD, TX | FAIRFIELD, OH

CONTACT US

Phone: (+1)423.756.5121

Website: sctray.com



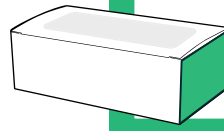
SOUTHERN CHAMPION TRAY®

Contact your SCT Packaging Expert for more information



@sctpackaging

TAKEOUT SOLUTIONS THAT DELIVER



TAKEOUT & TO-GO

Grab-N-Go

ITEMS 24603, 24613, and 24623 FEATURE STURDY WEBBED CORNERS

- Sturdy, webbed corner design **resists crushing and leaks***
- Anti-Fog windows offer **visibility to fresh, ready-to-eat food**
- **Sized right** for high-usage, multi purpose flexibility
- **Grease-proof design** keeps meals secure, fresh, and mess-free

*Item 12633 is a 6-corner beers, **not** webbed corner



24603



24613



24623



12633

GRAB-N-GO - WINDOWED BOXES:

automatic, 1 piece box, full top, webbed corner, SBS poly, packed in corrugated

Item #	Description	Size (in)	Size (cm)	Pack
24603	Mini Snack Box	5.75 X 3 X 2	14.6 X 7.6 X 5.1	500
24613	Snack Box	7.25 X 5.5 X 2.75	18.4 X 14.0 X 7.0	200
24623	Pizza Box	7 X 7 X 2	17.8 X 17.8 X 5.1	200

GRAB-N-GO - NON-WINDOWED BOX:

automatic, 1 piece box, full top, 6-corner beers, SBS poly, packed in corrugated

Item #	Description	Size (in)	Size (cm)	Pack
12633	Dinner Box	9 X 9 X 4	22.9 X 22.9 X 10.2	200



TAKEOUT & TO-GO

Fry Scoops & Sandwich Wedge



LOOK FOR ITEMS IN ORANGE
Limited cases available; items being discontinued soon!

FRY SCOOPS - WHITE:

food takeout, 1 piece, SBS, packed in corrugated

Item #	Description	Size (in)	Size (cm)	Pack
0704	5.5oz Medium French Fry Scoop	3-7/64 X 2 X 4-9/64	7.9 X 5.1 X 10.5	1000
0706	7.5oz Large French Fry Scoop	3-7/64 X 2 X 5-39/64	7.9 X 5.1 X 14.2	1000
0708	9oz Extra Large French Fry Scoop	3-1/2 X 2 X 6-1/2	8.9 X 4.9 X 16.6	1000



0708



0706

0704

WINDOW SANDWICH WEDGE:

automatic, poly coated inside, Kraft, packed in corrugated

Item #	Description	Size (in)	Size (cm)	Pack
24103	Window Sandwich Wedge	2-31/32 X 4-45/64 X 4-45/64	7.5 X 12 X 12	300



24103



LOCATIONS

CHATTANOOGA, TN | MANSFIELD, TX | FAIRFIELD, OH

CONTACT US

Phone: (+1)423.756.5121

Website: sctray.com



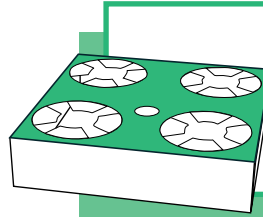
Southern Champion Tray®

Contact your SCT Packaging Expert for more information



@sctpackaging

SOUTHERN CHAMPION TRAY®



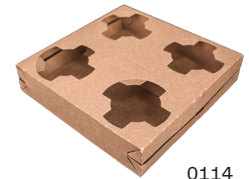
SECURE PERFORMANCE
drinks don't fall through



AUTOMATIC DRINK CARRIER:

1 piece, auto bottom, Kraft, packed in corrugated

Item #	Description	Size (in)	Size (cm)	Pack
0114	4-Cup Drink Carrier, 4-32 oz	8-1/2 X 8-1/2 X 2	21.6 X 21.6 X 5.1	300



0114

4-CORNER POP UP FOOD AND DRINK TRAY:

1 piece, Kraft, packed in corrugated

Item #	Description	Size (in)	Size (cm)	Pack
0120	4-Corner Food and Drink Tray	10 X 6-1/2 X 2-1/2	25.4 X 16.5 X 6.4	250
0121	Stadium Tray	10-1/2 X 10-1/2 X 3-11/16	26.7 X 26.7 X 9.4	200
0122	4-Corner Tray	8-5/8 X 5-1/2 X 2-1/4	21.9 X 14 X 5.7	500
0123	4-Corner Tray	9-5/8 X 5-3/4 X 2-3/8	24.4 X 14.6 X 6.0	500



0120 & 0122

CHAMPTRAY 4-CORNER POP UP FOOD AND DRINK TRAY:

1 piece, Kraft, packed in corrugated

Item #	Description	Size (in)	Size (cm)	Pack
0124	2-4-cup food and drink carrier	9-1/4 x 8-1/2 x 3-7/8	23.5 X 21.6 X 9.8	225



0124 & 2-#100 Trays

AUTOMATIC DRINK CARRIER WITH HANDLE:

1 piece, Kraft, packed in corrugated

Item #	Description	Size (in)	Size (cm)	Pack
2797*	4-Cup Drink Carrier, up to 24 oz	6-1/2 X 6-1/4 X 9	16.5 X 15.9 X 22.9	250
2788*	4-Cup Drink Carrier, up to 32 oz	7-1/4 X 7 X 9-1/4	18.4 X 17.8 X 23.5	250
2795	2-Cup Drink Carrier, up to 24 oz	7-5/8 X 3-3/4 X 8-7/8	19.4 X 9.5 X 22.5	250
2790	4-Cup Drink Carrier w/ handle, up to 44 oz	8 X 8 X 10-1/4	20.3 X 20.3 X 26	250



0124 & 1-#300 Tray

*Add-A-Bag feature: unique to items 2797 and 2788. Tear perforated cup separator at outside edge. Separator will fold back, leaving an open space for a 6lb bag into item 2797 and an 8lb bag into item 2788.

MOLDED FIBER DRINK CARRIER:

1 piece, molded fiber, poly wrapped

Item #	Description	Pack
0117	4-Cup Drink Carrier, 4-44 oz	4 X 75 = 300



0117



2797

LOCATIONS

CHATTANOOGA, TN | MANSFIELD, TX | FAIRFIELD, OH

CONTACT US

Phone: (+1)423.756.5121

Website: sctray.com



Southern Champion Tray®

Contact your SCT Packaging Expert for more information



@sctpackaging

SOUTHERN CHAMPION TRAY®